



NOTES:

FIXTURE TYPE:

PROJECT:

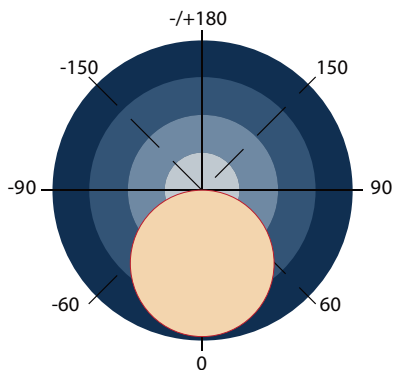


PRODUCT DESCRIPTION

The post top provides a unique, scalable lighting solution targeted for 8' to 20' mounting heights. Its design brings proportion to parking lots, drive lanes, entrances, building perimeters and pathways. The excellent optical design that deliver the smooth light with a very good uniformity. The structure is clean and more popular, promotes harmony between the outdoor lighting and architecture.

PHOTOMETRICS

General



FEATURES

Construction

- Rugged die-cast aluminum housing secures the thermally conductive LED panel and electrical cha.
- Show off urban style by the simple shape and the solid material.
- Housing is completely sealed against moisture and environmental contaminants.

Optics

- The 130W offers the color tunable version, the CCT can be changed to 3000K/4000K/5000K.
- Scalable Lumen Packages from 5,400 to 16,300 Lumens.
- High performance UV stabilized optical grade polymer optic lenses to achieve desired distribution optimized to get target lumens and a superior lighting uniformity.
- The optics can conform to dark sky requirement.

Electrical

- Universal 120-277 VAC
- Standard with 0-10V dimming allowing for 10% to 100% dimming.
- THD: ≤20%
- Power Factor: ≥90%

Controls

- Optional occupancy sensor.
- Optional Photocell.

Ambient Temperature

- Ambient operating temperature -40°C to 45°C (-40°F to 113°F).

Lifespan

- Estimated 100,000-hour LED lifespan based on IES LM-80 results and TM-21 calculations.

Warranty

- Five-year warranty.

Certifications

- UL cUL wet location listed.
- DesignLights Consortium™ Qualified.

Note: Please refer to the DLC website for specific product qualifications at www.designlights.org.

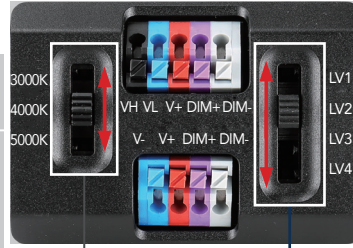
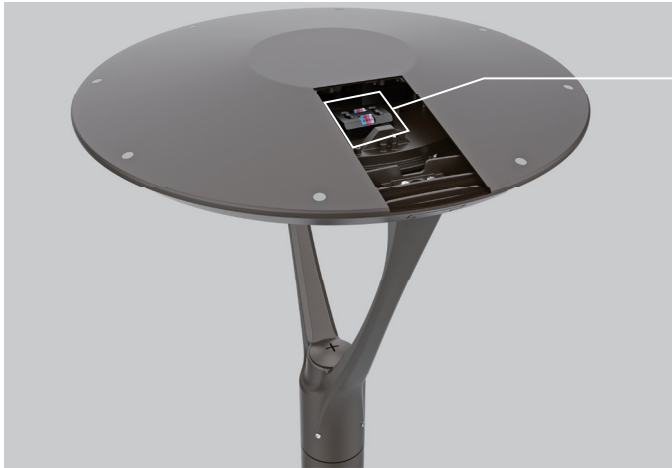
• Actual performance may differ as a result of end-user environment and application. All values are design or typical values, measured under laboratory conditions at 25°C(±5°C) specifications subject to change without notice.

ORDERING INFORMATION

EXAMPLE: MPL01-130W-27V-DDK-D

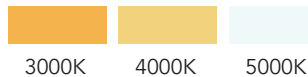


Model	Wattage	Voltage	CCT	Finish	Photocell (Option)	Sensor (Option)
MPL01 = Post Top Light	130W = 130Watts	27V = 120-277V	DDK=Adjustable color temperature	D = Dark Bronze	PO = 120-277V Photocell Blank = Without Photocell	M = With Motion Sensor Blank = Without Motion Sensor



CCT AND WATTAGE SELECTABLE
This fixture has the function of adjusting the lumens output and color temperature on-site.

CCT SELECT



3000K 4000K 5000K
Offer three CCT adjustable (3000K, 4000K, 5000K).

WATTAGE SELECT



130W

Each model supports wattage regulation: 130W

ADJUSTABLE LUMEN OUTPUT TABLE

SWITCH SETTING	SETTING WATTS	VOLTAGE	CRI	LUMENS 3000 K	LPW 3000 K	LUMENS 4000 K	LPW 4000 K	LUMENS 5000 K	LPW 5000 K
LV1	130W	120-277VAC	70	16000 lm	123 lm/W	17200 lm	132 lm/W	16300 lm	125 lm/W

ELECTRICAL DATA

NUMBER OF DRIVERS	DRIVER CURRENT (mA)	NOMINAL POWER (W)	INPUT VOLTAGE (V)	CURRENT (Amps)
2	3500	130	120	1.08
		130	208	0.63
		130	240	0.54
		130	277	0.47

ACCESSORIES (OPTIONAL)



PIR Motion Sensor, 120-277V
USE: Sensor can be pre-installed in factory or field installed.

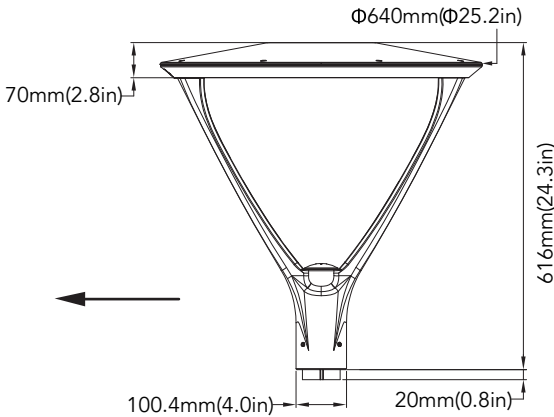
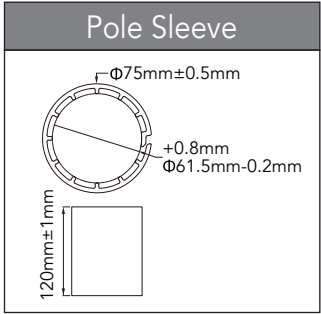


Photocell - 120V-277V
347V/480V
USE: Photocell is field installed.

DIMENSIONS

unit: inch/mm

Net weight:
130W: 25.699lbs



EPA OF POST TOP

Item	
EPA	0.9696