

# TrÉbon™ High Mast



200W Smart High Mast Light  
LX-HM-200

## FEATURES

- Flexible, modular design
- Multiple choice of optical lenses
- Advanced, vortex air flow thermal management
- Easy, low cost maintenance and repair
- UL, CUL certified to wet location

## TYPICAL APPLICATIONS

- Town Squares
- Stadiums
- Fields
- Overpasses
- Docks

## SPECIFICATIONS

### PERFORMANCE

LED Chip	CREE XT-E
Lumen Output (IES)	19,243 lm
Power Consumption	202 W
Efficacy (IES)	95 lm/W
Beam Angle	30°, 45°
Color Temperature	5000K (3000 or 4000K Optional)
CRI	≥70
Lumen Maintenance	L70>150,000 hours (Calculated Using TM-21 Calculator)
Input Voltage	100-277 VAC (Dimming Optional)
Power Factor	0.95 minimum
Surge Protection	Per IEC 61000-4-5
EMI	EMC Per EN 55015

### ENVIRONMENTAL

IP Rating	IP65
Operating Temperature	-30 to 55°C (-22 to 131°F)
Humidity	15% to 90% RH

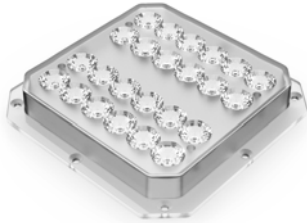
### PHYSICAL

Dimensions (L×W×H)	15.7×15.7×7.1 in
Weight	11.4 kg (25.1 lbs)
Mounting Options	Universal Hanging Bracket, Mounting Bracket c/w Clapping Ring
Fixture Material	Aluminum Alloy

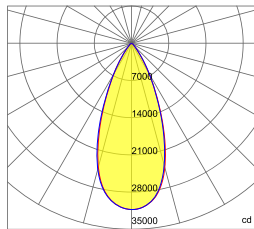
### WARRANTY

5 Years

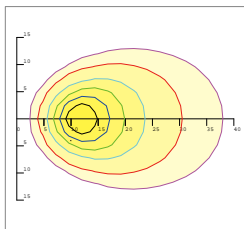
**Photometrics**



**45 DEGREE LENS**



— 0.0~180.0  
— 90.0~270.0



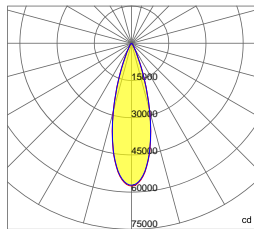
Mounting Hight 12m, 60 Tilt,  
50LUX-5LUX

Height	Beam Diameter	LUX
15m	φ 12m	138LUX
20m	φ 17m	78LUX
25m	φ 21m	50LUX
30m	φ 25m	35LUX
35m	φ 29m	26LUX

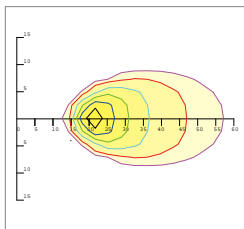
Beam Angle (50% max)	45 DEG
Field Angle (10%)	73 DEG
Luminous Flux (IES)	19,243 lm
Light Efficacy (IES)	95 lm/W
NEMA Type	5H x 5V
BUG Rating	B5-U1-G1
UGR	14
Cutoff Classification	Cutoff



**30 DEGREE LENS**



— 0.0~180.0  
— 90.0~270.0



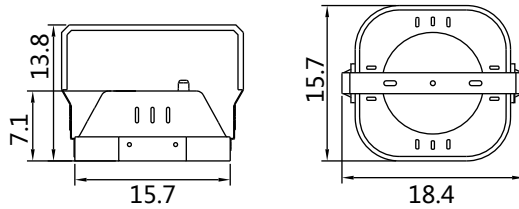
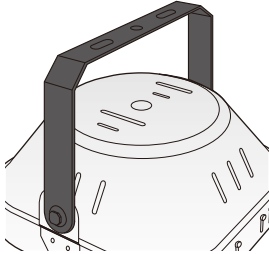
Mounting Hight 18m, 60 Tilt,  
50LUX-5LUX

Height	Beam Diameter	LUX
25m	φ 13m	121LUX
30m	φ 16m	84LUX
35m	φ 19m	61LUX
40m	φ 21m	47LUX
45m	φ 24m	37LUX

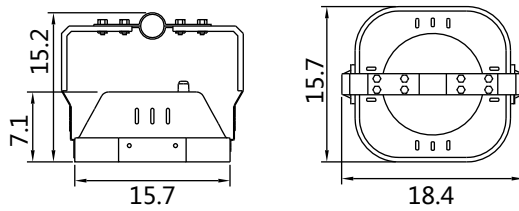
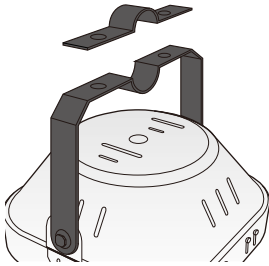
Beam Angle (50% max)	35 DEG
Field Angle (10%)	48 DEG
Luminous Flux (IES)	18,785 lm
Light Efficacy (IES)	93 lm/W
NEMA Type	3H x 3V
BUG Rating	B5-U1-G0
UGR	14
Cutoff Classification	Cutoff

**Mounting Options**

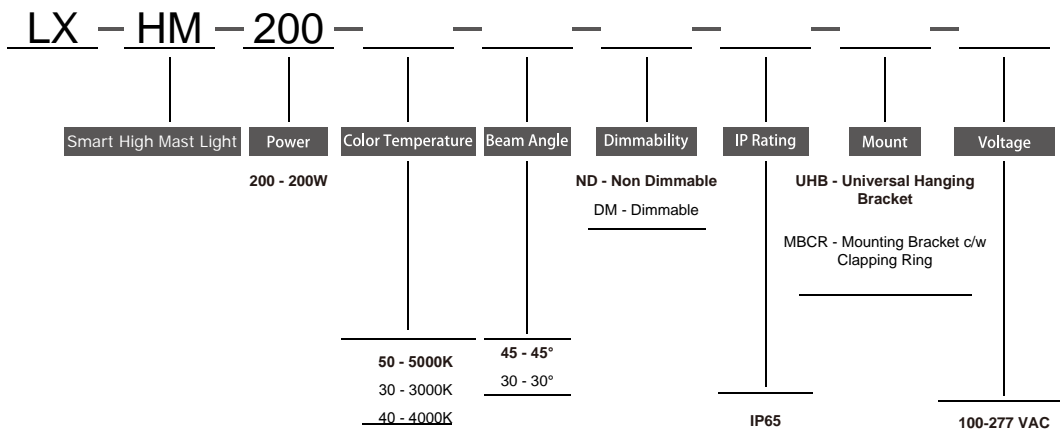
Universal Hanging Bracket



Mounting Bracket c/w Clapping Ring



**Ordering Information**



Ordering Example:  
LX-HM-200-50-45-ND-IP65-UHB-100-277

