



NOTES:

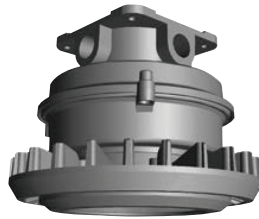
FITURE TYPE:

PROJECT:

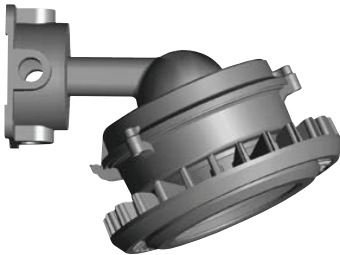
Pendant Mount



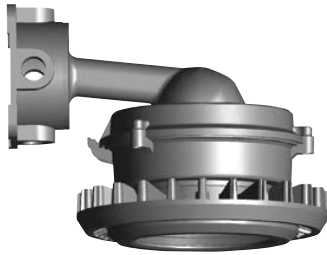
Ceiling Mount



Wall Mounts

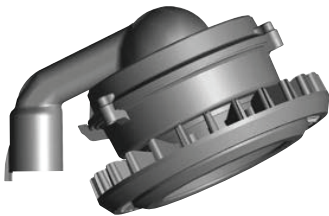


Shown with 25° Wall Mount

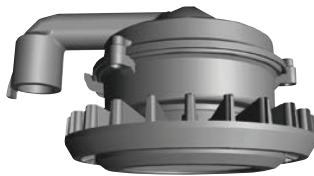


Shown with 90° Wall Mount

Stanchion Mounts

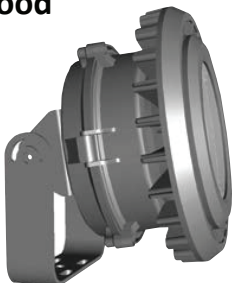


Shown with 25° Stanchion Mount



Shown with 90° Stanchion Mount

Flood



Shown with 25° Adjustable Yoke

PRODUCT DESCRIPTION

The HLP15Q Class 1, Division 2 Explosion Proof Hazardous Location Luminaire is available with a clear tempered glass lens. Typical lighting applications include industrial facilities, oil, gas, painting facilities, manufacturing, and auto service facilities.

FEATURES

Housing:

Heavy-Duty Die Cast Aluminum Housing

Listing & Ratings:

ETL Listed for Hazardous Locations Per UL844 as Follows: Class 1, Division 2 Groups A, B, C, D; T4 Temperature Rating, -25°C to +50°C Ambient. Suitable for Wet Locations, IP66 Sealed LED Compartment

Finish:

Powdercoat Finish Over a Chromate Conversion Coating.

Lens:

Clear Tempered Glass Lens

Mounting Options:

Mountings Include Pendant (Conduit by Others), Ceiling Mount Box, 25° and 90° Wall Mount with Box, 25° and 90° Stanchions, and Adjustable Yoke. Yoke Mount Includes 316/3 SJOOW Yellow Jacketed Cord and Rated Connector. Rated for 6 #12 AWG 90°C for Through Wiring.

EasyLED LED:

Aluminum Boards

Wattage:

Array: 56.7w, System: 64w

Driver:

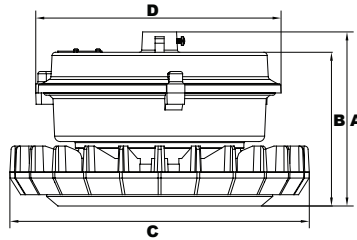
Electronic Driver, 120-277V, 50/60Hz; Less Than 20% THD and PF>0.90. Standard Internal Surge Protection 6kV. 0-10V Dimming Standard for a Dimming Range of 100% to 10%; Dimming Source Current is 150 Micro-amps.

Warranty:

5-Year Warranty

See Page 4 for Projected Lumen Maintenance Table.

PENDANT MOUNT



DIMENSIONS

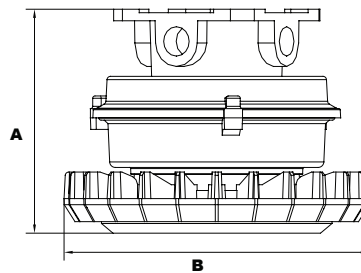
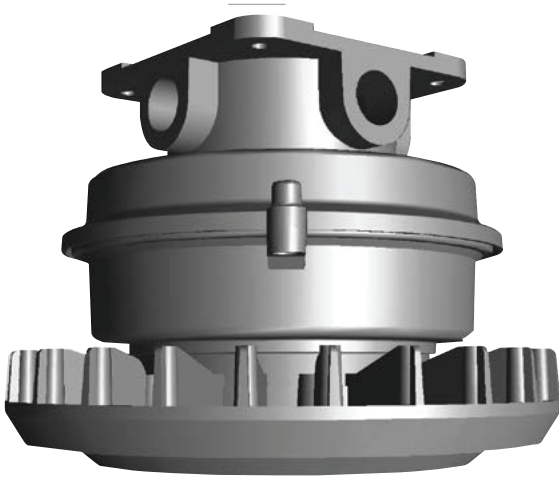
Height 1 (A)	6" (154mm)
Height 2 (B)	5¼" (136mm)
Diameter 1 (C)	10½" (265mm)
Diameter 2 (D)	8½" (217mm)

ORDERING INFORMATION

ORDERING EXAMPLE: HLP15QF57U5KCGPSP

Model	Optics	Wattage	Driver	CCT	Lens	Color	Mount	Options
HLP15Q= EasyLED Hazardous Location Explosion Proof Luminaire	F=Wide	57=57w	U=120-277V	5K=5000K	C=Clear Tempered Glass Lens	G=Gray	P=Pendant Mount (Conduit by Others)	SP=Surge Protection

CEILING MOUNT



DIMENSIONS

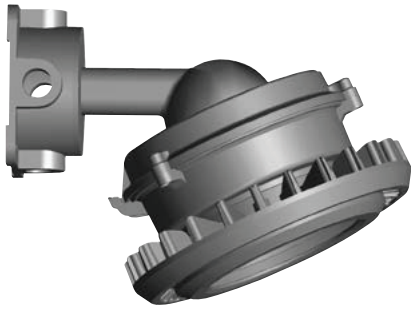
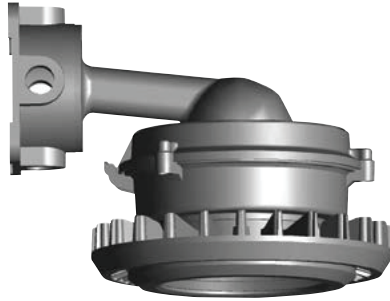
Height (A)	7¾" (194mm)
Diameter (B)	10½" (265mm)

ORDERING INFORMATION

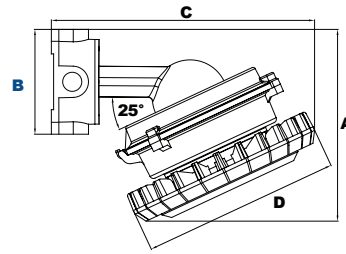
ORDERING EXAMPLE: HLP15QF57U5KCGCMSP

Model	Optics	Wattage	Driver	CCT	Lens	Color	Mount	Options
HLP15Q= EasyLED Hazardous Location Explosion Proof Luminaire	F=Wide	57=57w	U=120-277V	5K=5000K	C=Clear Tempered Glass Lens	G=Gray	CM=Ceiling Mount	SP=Surge Protection

WALL MOUNTS

Shown with 25°
Wall MountShown with 90°
Wall Mount

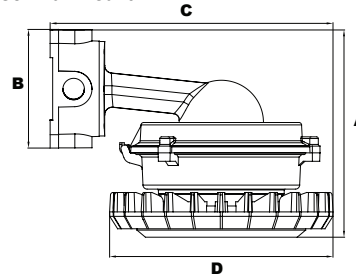
25° Wall Mount



DIMENSIONS

Height 1 (A)	10" (256mm)
Height 2 (B)	5½" (140mm)
Length (C)	13¾" (352mm)
Width (D)	10½" (265mm)

90° Wall Mount



DIMENSIONS

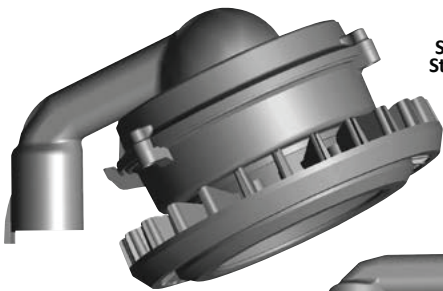
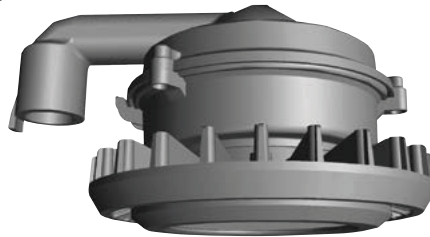
Height 1 (A)	9¾" (246mm)
Height 2 (B)	5½" (140mm)
Length (C)	13¾" (336mm)
Width (D)	10½" (265mm)

ORDERING INFORMATION

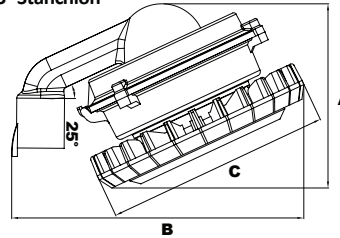
ORDERING EXAMPLE: HLP15QF57U5KCGS25SP

Model	Optics	Wattage	Driver	CCT	Lens	Color	Mount	Options
HLP15Q= EasyLED Hazardous Location Explosion Proof Luminaire	F=Wide	57=57w	U=120-277V	5K=5000K	C=Clear Tempered Glass Lens	G=Gray	W25 = 25° Wall Mount W90 = 90° Wall Mount	SP=Surge Protection

STANCHION MOUNTS

Shown with 25°
Stanchion MountShown with 90°
Stanchion Mount

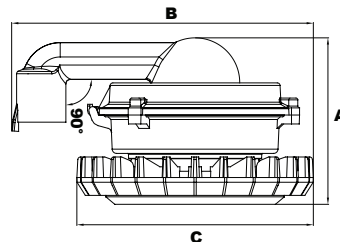
25° Stanchion



DIMENSIONS

Height 1 (A)	8½" (216mm)
Length (B)	13½" (343mm)
Width (C)	10½" (265mm)

90° Stanchion



DIMENSIONS

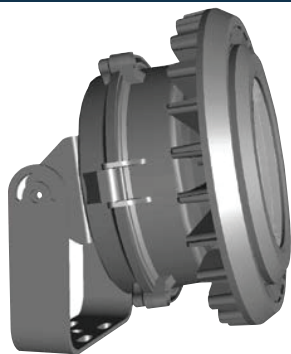
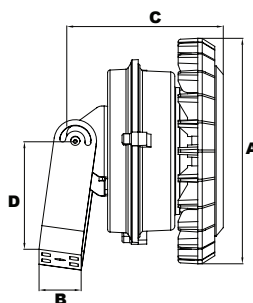
Height 1 (A)	7¼" (186mm)
Length (B)	13¾" (338mm)
Width (C)	10½" (265mm)

ORDERING INFORMATION

ORDERING EXAMPLE: HLP15QF57U5KCGS25SP

Model	Optics	Wattage	Driver	CCT	Lens	Color	Mount	Options
HLP15Q= EasyLED Hazardous Location Explosion Proof Luminaire	F=Wide	57=57w	U=120-277V	5K=5000K	C=Clear Tempered Glass Lens	G=Gray	S25= 25° Stanchion S90= 90° Stanchion	SP=Surge Protection

FLOOD

Shown with
Adjustable Yoke

DIMENSIONS

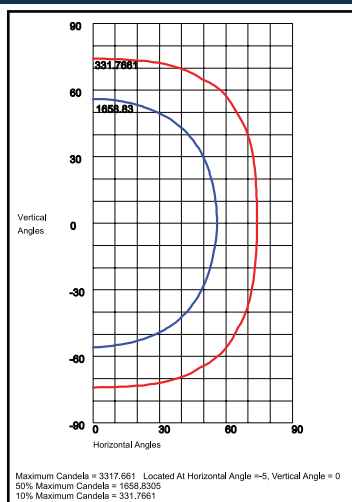
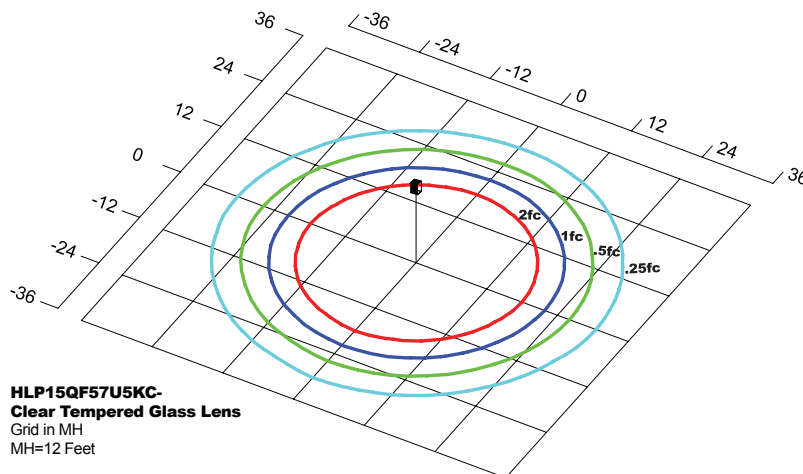
Height (A)	10½" (265mm)
Width (B)	2" (50mm)
Length 1 (C)	7¼" (184mm)
Length 2 (D)	5" (126mm)

ORDERING INFORMATION

ORDERING EXAMPLE: HLP15QF57U5KCGYSP

Model	Optics	Wattage	Driver	CCT	Lens	Color	Mount	Options
HLP15Q= EasyLED Hazardous Location Explosion Proof Luminaire	F=Wide	57=57w	U=120-277V	5K=5000K	C=Clear Tempered Glass Lens	G=Gray	Y=Adjustable Yoke	SP=Surge Protection

PHOTOMETRIC DATA

HLP15QF57U5KC-
Clear Tempered Glass Lens

PHOTOMETRIC PERFORMANCE

LED Board Watts	Drive Current (mA)	Input Watts	Optics	5000 CCT 80 CRI	
				Lumens	LPW
EasyLED 57w (Clear Lens)	175	64	F 110°H x 110°V, NEMA 7H x 7V	8,957	140

PROJECTED LUMEN MAINTENANCE

Data shown for 5000 CCT		Compare to MH				
TM-21-11	Input Watts	Initial	25,000 Hrs	50,000 Hrs	100,000 Hrs	Calculated L70@ 25°C
L70 Lumen Maintenance @ 25°C / 77°F	64	1.00	0.96	0.92	0.84	183,000
TM-21-11	Input Watts	Initial	25,000 Hrs	50,000 Hrs	100,000 Hrs	Calculated L80@ 40°C
L80 Lumen Maintenance @ 50°C / 104°F	64	1.00	0.93	0.86	0.71	105,000
TM-21-11	Input Watts	Initial	25,000 Hrs	50,000 Hrs	100,000 Hrs	Calculated L80@ 40°C
L80 Lumen Maintenance @ 40°C / 104°F	64	1.00	0.94	0.88	0.75	81,000

NOTES:

1. Projected per IESNA TM-21-11. Data references the extrapolated performance projections for the 175mA base model in a 25°C ambient, based on 10,000 hours of LED testing per IESNA LM-80-08.
2. Compare to MH box indicates suggested Light Loss Factor (LLF) to be used when comparing to Metal Halide (MH) systems.