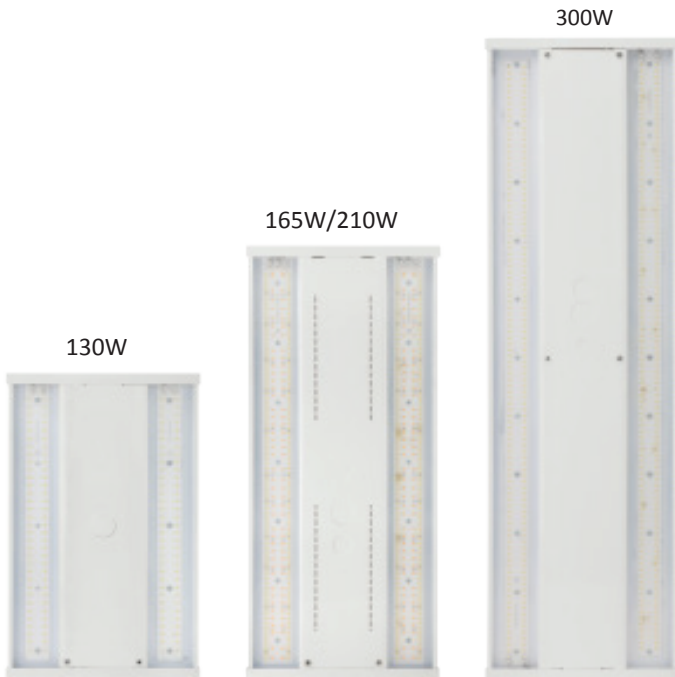
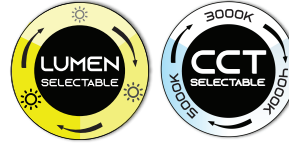


L70
25°C **50,000 Hours**



SPECIFICATION FEATURES

Construction

- Rugged cold-rolled steel plate corrosion-resistant housing.
- Ultra-Compact, Sturdy Design saves freight and space on lifts and racks during installation.
- Visual comfortable light comes from a simple contour.

Optics

- Scalable Lumen Packages from 8,000 to 60,000 Lumens.
- Prismatic diffuser reduces glare.
- This fixture has the function of adjusting the lumens output and color temperature on-site.

LED Module

- Light engine has color adjustable version, CCT can be adjusted to 4000K/5000K.

Electrical

- Universal 120-277VAC or 347-480VAC input voltage.
 - 0-10V dimming driver standard for 10% to 100% dimming.
 - 6KV surge protection.
 - Both drivers have a power factor >90%, THD <20%
 - Each model can be adjusted four watts: 100%, 80%, 60%, 40%
 - Operating temperature is -40°C to 50°C (-40°F to 122°F).
- Note: Operating with emergency battery temperature range: 0°C to 50°C (+32°F- +122°F).

Controls

- Optional Occupancy sensor, Microwave sensor, Multifunction Sensor or daylight sensor.
- Optional Bluetooth sensor or Bluetooth controller.
- Silvair Luminaire Level Lighting Control (LLC) optional
- Sharkward Luminaire Level Lighting Control (LLC) optional.
- Haisen Luminaire Level Lighting Control (LLC) optional.
- Also compatible with 3rd party smart network control system.
- Compatible with high end trim.

Installation

- Aircraft cable mount (standard).
- Pendant mount (option).
- Surface mount (option).

Lifespan

- Estimated 50,000 hour LED lifespan based on IES LM-80 results and TM-21 calculations.

Warranty

- Five-year limited warranty.

Certifications

- UL cUL damp location listed.

Note: Actual performance may differ as a result of end-user environment and application. All values are design or typical values, measured under laboratory conditions at 25°C(±5°C) specifications subject to change without notice.

PRODUCT DESCRIPTION

Our MLH06 series is a simple linear design of fixture, showing high energy efficiency and high performance on a low budget. Compared to traditional light sources, it can save more than 60 percent of energy costs and significantly improve lighting performance.

The perfect combination of optics and design makes it a fixture that is both beautiful and practical. It also comes with a colored temperature adjustment function that allows it to capture the unique atmosphere of the scene, and an excellent thermal management system effectively extends the service life of the fixture, making it ideal for warehousing, large indoor spaces, retail and commercial applications.

ORDERING INFORMATION

EXAMPLE: MLH06-210W-27V-DDK-PD

Model	Wattage	Voltage	CCT	Finish	Sensor (Option)	Battery Backup (Option)
MLH06 = Linear high bay series	130W 165W 210W 300W	27V = 120-277V 48V = 347/480V	DDK ² = Adjustable color temperature	PD = Prismatic Diffuser	M = PIR Sensor Blank = Without Sensor	B = Emergency Battery Blank = Without Emergency Battery

Note: 1. Pendant and surface mounting isn't supported with emergency battery.
2. CCT Adjustable (4000K/5000K) for 130W, 165W, 210W, 300W.



DIFFUSER OPTIONS

Power and CCT controller

The wattage and CCT can be changed by switch selection on the controller, provides quick and easy on-the-spot reconfiguring, eliminating any go-backs.

Emergency Battery

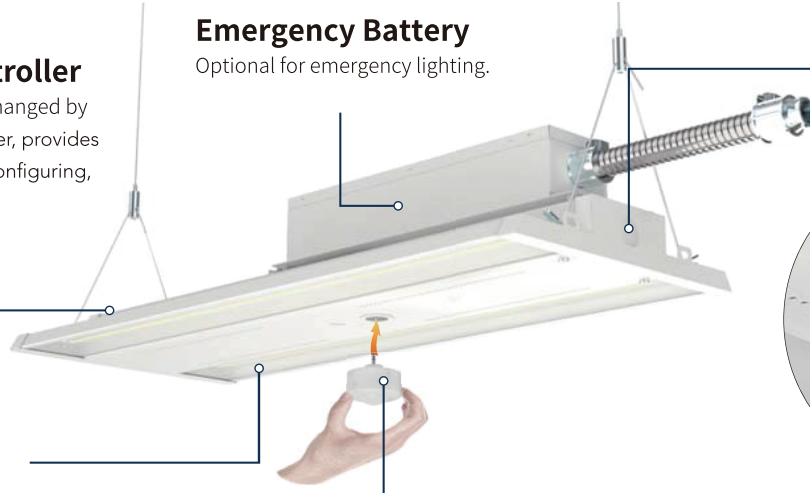
Optional for emergency lighting.

Threaded Conduit

Support wires coming from the hole for easier wire connections.

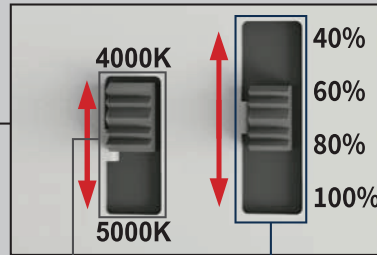
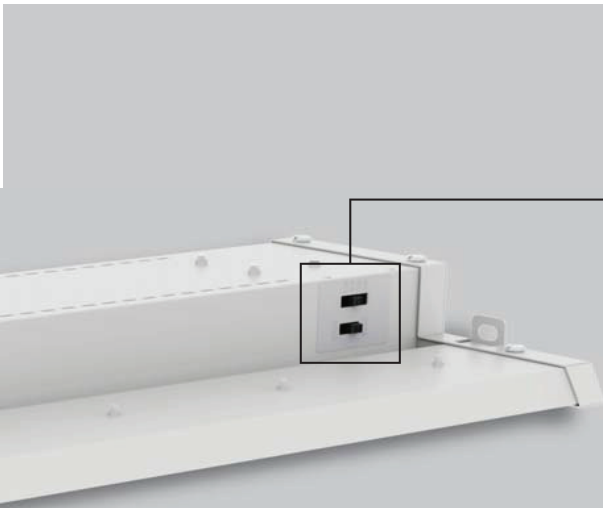
Diffuser Panel

Prismatic diffuser



Plug-and-Play Sensor

Sensor allows for security and energy saving.



CCT AND WATTAGE SELECTABLE
This fixture has the function of adjusting the lumens output and color temperature on-site.

CCT SELECT

4000K 5000K

Offer two CCT adjustable (4000K, 5000K).

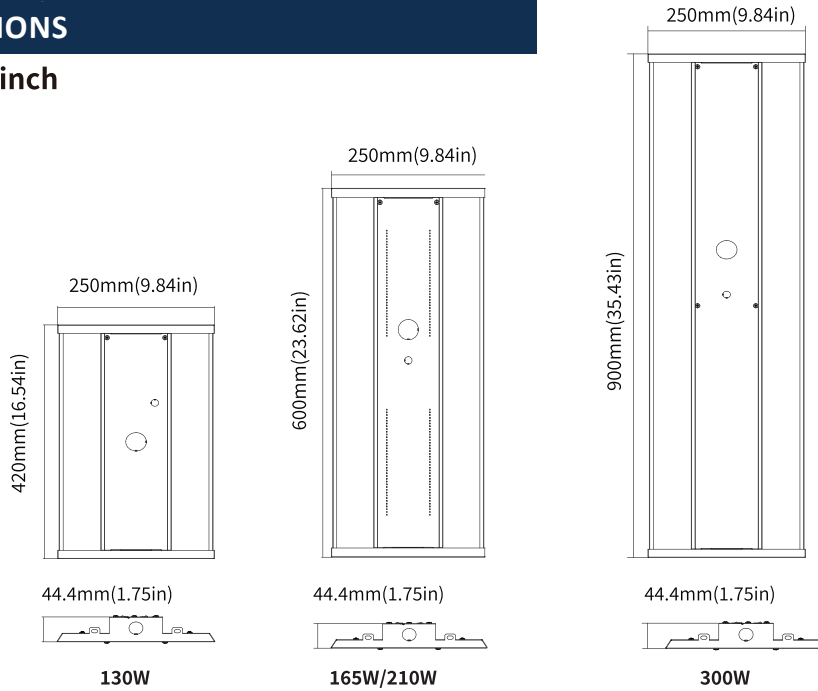
WATTAGE SELECT

40% 60% 80% 100%

Each model supports 4 positions wattage regulation: 40%, 60%, 80%, 100%

DIMENSIONS

unit: mm/inch



PERFORMANCE DATA

MLH06130W

SETTING	SYSTEM WATTS	4000K		5000K	
		LUMENS (70CRI)	LPW (70CRI)	LUMENS (70CRI)	LPW (70CRI)
100%	130W	18600lm	143lm/W	18200lm	140lm/W
80%	104W	15500lm	149lm/W	15000lm	144lm/W
60%	78W	12000lm	154m/W	11600lm	149lm/W
40%	52W	8300lm	160lm/W	8000lm	154lm/W

MLH06165W

SETTING	SYSTEM WATTS	4000K		5000K	
		LUMENS (70CRI)	LPW (70CRI)	LUMENS (70CRI)	LPW (70CRI)
100%	165W	24500lm	148lm/W	24000lm	145lm/W
80%	132W	20000lm	152lm/W	19500lm	148lm/W
60%	99W	15500lm	157lm/W	15000lm	152lm/W
40%	66W	10800lm	164lm/W	10300lm	156lm/W

MLH06210W

SETTING	SYSTEM WATTS	4000K		5000K	
		LUMENS (70CRI)	LPW (70CRI)	LUMENS (70CRI)	LPW (70CRI)
100%	210W	31000lm	148lm/W	30500lm	145lm/W
80%	180W	27500lm	153lm/W	27000lm	150lm/W
60%	130W	20600lm	158lm/W	20000lm	154lm/W
40%	100W	16500lm	165lm/W	16000lm	160lm/W

MLH06300W

SETTING	SYSTEM WATTS	4000K		5000K	
		LUMENS (70CRI)	LPW (70CRI)	LUMENS (70CRI)	LPW (70CRI)
100%	300W	43000lm	143lm/W	42000lm	140lm/W
80%	240W	36000lm	150lm/W	35000lm	146lm/W
60%	180W	28000lm	156lm/W	27500lm	153lm/W
40%	120W	19500lm	163lm/W	19000lm	158lm/W

ELECTRICAL DATA








NUMBER OF DRIVERS	DRIVER CURRENT (mA)	NOMINAL POWER (W)	INPUT VOLTAGE (V)	CURRENT (Amps)
1	600	130	120	1.08
		130	208	0.63
		130	240	0.54
		130	277	0.47
		130	347	0.37
		130	480	0.27

NUMBER OF DRIVERS	DRIVER CURRENT (mA)	NOMINAL POWER (W)	INPUT VOLTAGE (V)	CURRENT (Amps)
1	740	165	120	1.38
		165	208	0.79
		165	240	0.69
		165	277	0.60
		165	347	0.48
		165	480	0.34

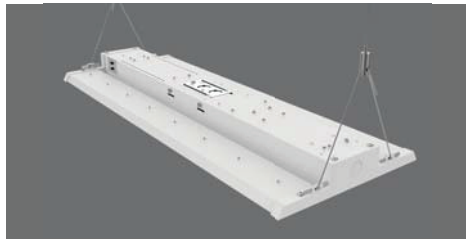
NUMBER OF DRIVERS	DRIVER CURRENT (mA)	NOMINAL POWER (W)	INPUT VOLTAGE (V)	CURRENT (Amps)
1	1000	210	120	1.75
		210	208	1.01
		210	240	0.88
		210	277	0.76
		210	347	0.61
		210	480	0.44

NUMBER OF DRIVERS	DRIVER CURRENT (mA)	NOMINAL POWER (W)	INPUT VOLTAGE (V)	CURRENT (Amps)
1	1200	300	120	2.50
		300	208	1.44
		300	240	1.25
		300	277	1.08
		300	347	0.86
		300	480	0.63

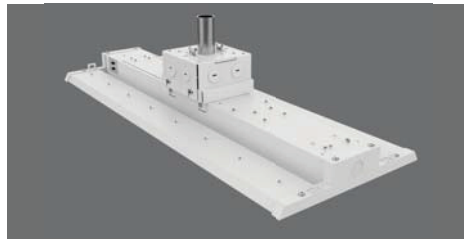
OPTIONS/ACCESSORIES

 <p>Emergency Battery Backup USE: 8W, 900lm, 90min. Suite for 130W.</p>	 <p>Emergency Battery Backup USE: 15W, 2000lm, 90min. Suite for 165W, 210W, 300W.</p>	 <p>Emergency Battery 30W, 4000lm, 90min, suite for 347-480V input voltage Only suit for 130W, 165W, 210W</p>	
 <p>Plug-and-Play PIR Sensor PIR sensor: MHANT12VPH01 Bluetooth PIR sensor: MHANT12VPHB01</p>	 <p>Aircraft Cable (Standard)</p>	 <p>Pendant Hanger USE: Pendant with 3/4" conduit. (Sold separately) Part# PH</p>	 <p>Wire Guards (Sold separately) Part# WG-LH06-130W WG-LH06-165/210W WG-LH06-300W</p>

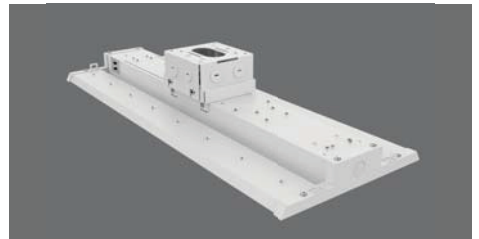
MOUNTING



Mounting with Aircraft Cable (Standard)



Conduit Pendant Mount



Surface Mounting