

L70  
25°C

50,000 Hours



130W/160W



210W/260W

## FEATURES

### Construction

- The rugged, one-piece die-cast aluminum housing features a rock-solid quality and performance.
- The LED module and driver are I-separated and extend service life through convection cooling, thermal management.
- The compact design saves labor cost and improves installation efficiency.
- Innovative contractor-friendly packaging makes installation faster.

### Optics

- Light engines are available in color selectable version, the CCT can be changed to two CCTs (4000K, 5000K).
- Scalable Lumen Packages from 8,200 to 37,000 Lumens.
- Prismatic translucent lens is designed to shape the light uniformity and controls the glare light.
- Optional for aisle lens has an asymmetric distribution for aisle or rack areas.

### Electrical

- Universal 120-277VAC or 347-480VAC input voltage.
  - Wattage adjustable: 100%, 80%, 60%, 40%.
  - 0-10V dimming standard for a dimming range of 100% to 10%.
  - Operating Temperature Range: -40°C to 50°C (-40°F - + 122°F).
- Note: Operating with emergency battery temperature range: 5°C to 50°C (+41°F - + 122°F).

### Installation

- Steel wire rope mount (default).
- Surface mount (option).
- Conduit pendant mount (option).

### Applications

- Suitable for commercial, retail and institutional applications including gymnasiums, factories and warehouses.

### Lifespan

- Estimated 50,000-hour LED lifespan based on IES LM-80 results and TM-21 calculations.

### Warranty

- Five-year limited warranty.

### Certifications

- UL cUL damp location listed. Note
- Actual performance may differ as a result of end-user environment and application. All values are design or typical values, measured under laboratory conditions at 25°C(±5°C) specifications subject to change without notice.

## PRODUCT DESCRIPTION

The MLH05 series is a rugged, reliable, versatile and durable compact Linear high bay. The specially designed optical system can effectively reduce glare and provide comfortable illumination effect. The use of reliable and durable die-cast housings contributes to longer service life and increased efficiency. The MLH05 also offers field- adjustable lumen output in four gears: 100%, 80%, 60%, 40%; CCT options are available in two color temperatures, 4000K and 5000K. Both are operated by a simple DIP switch. This will significantly reduce the customer's SKU and thus achieve a budget-friendly purpose.

## ORDERING INFORMATION

EXAMPLE: MLH05-130W-27V-DDK-W-PD

Model	Wattage	Voltage	CCT	Finish	Lens	Sensor (Option)	Backup Battery (Option)	Surge Protector (Option)	Internal Code
MLH05 = Linear high bay series	130W 160W 210W 260W	27V=120-277V 48V=347/480V	DDK = CCT Adjustable	W =White	PD = Prismatic Diffuser AL = Aisle Lens	M =Motion Sensor Blank = Without Sensor	B = Emergency Battery Blank = Without Emergency Battery	S = Surge Protector Blank= Without Surge Protector	Blank = Alphanumeric

## PERFORMANCE DATA

## MLH05 130W

SETTING	SYSTEM WATTS	4000K		5000K	
		LUMENS (80CRI)	LPW (80CRI)	LUMENS (80CRI)	LPW (80CRI)
100%	130W	19000lm	146 lm/W	18000lm	138 lm/W
80%	104W	15800lm	152 lm/W	15000lm	144 lm/W
60%	78W	12500lm	160 lm/W	11800lm	151 lm/W
40%	52W	8800lm	169 lm/W	8200lm	158 lm/W

## MLH05 160W

SETTING	SYSTEM WATTS	4000K		5000K	
		LUMENS (80CRI)	LPW (80CRI)	LUMENS (80CRI)	LPW (80CRI)
100%	160W	25000lm	156 lm/W	24000lm	150 lm/W
80%	128W	21000lm	164 lm/W	20000lm	156 lm/W
60%	96W	16200lm	169 lm/W	15500lm	161 lm/W
40%	64W	11200lm	175 lm/W	10600lm	166 lm/W

## MLH05 210W

SETTING	SYSTEM WATTS	4000K		5000K	
		LUMENS (80CRI)	LPW (80CRI)	LUMENS (80CRI)	LPW (80CRI)
100%	210W	31000lm	148 lm/W	30300lm	144 lm/W
80%	168W	25500lm	152 lm/W	25000lm	149 lm/W
60%	126W	20000lm	159 lm/W	19200lm	152 lm/W
40%	84W	14000lm	167 lm/W	13500lm	161 lm/W

## MLH05 260W

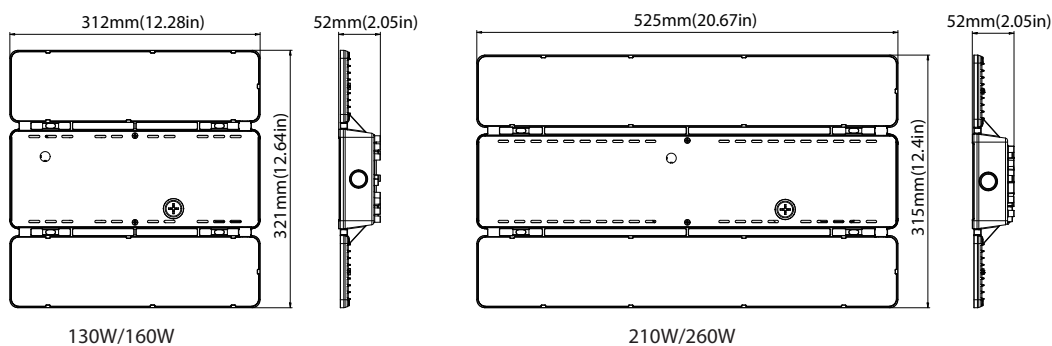
SETTING	SYSTEM WATTS	4000K		5000K	
		LUMENS (80CRI)	LPW (80CRI)	LUMENS (80CRI)	LPW (80CRI)
100%	260W	37000lm	142 lm/W	36000lm	138 lm/W
80%	208W	31500lm	151 lm/W	31000lm	149 lm/W
60%	156W	25500lm	163 lm/W	25000lm	160 lm/W
40%	104W	18000lm	173 lm/W	17500lm	168 lm/W

## ELECTRICAL DATA

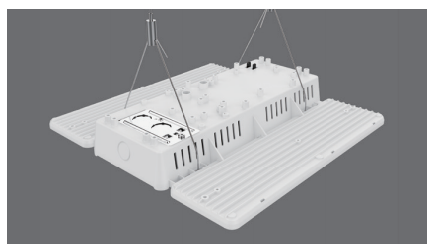
NUMBER OF DRIVERS	DRIVER CURRENT (mA)	NOMINAL POWER (W)	INPUT VOLTAGE (V)	CURRENT (Amps)
1	700	130	120	1.08
		130	208	0.63
		130	240	0.54
		130	277	0.47
		130	347	0.37
		130	480	0.27
1	750	160	120	0.75
		160	208	1.30
		160	240	1.50
		160	277	1.73
		160	347	2.17
		160	480	3.00
1	970	210	120	1.75
		210	208	1.01
		210	240	0.88
		210	277	0.76
		210	347	0.61
		210	480	0.44
1	1200	260	120	2.17
		260	208	1.25
		260	240	1.08
		260	277	0.94
		260	347	0.75
		260	480	0.54

## DIMENSIONS

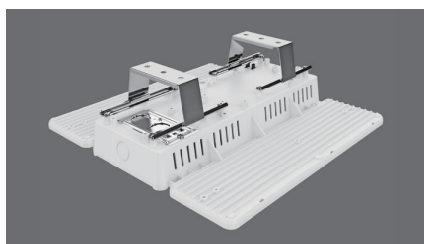
unit: mm/inch



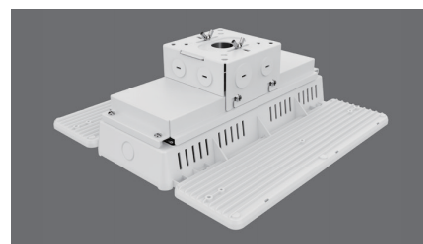
## MOUNTING



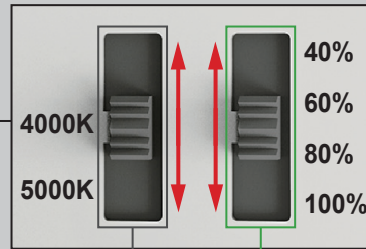
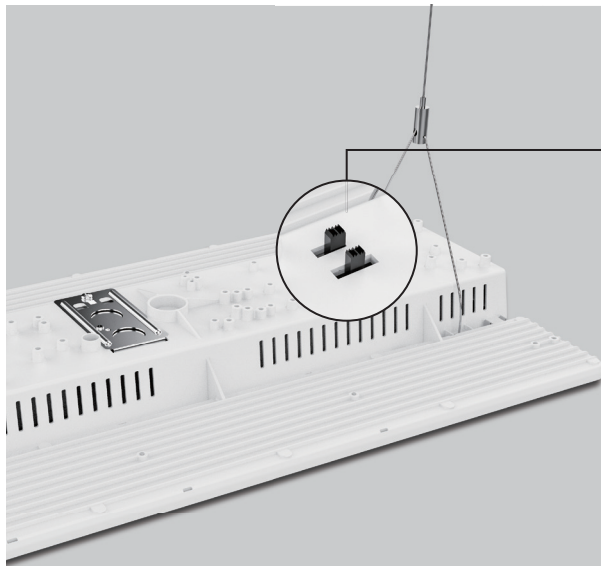
Mounting With Steel Wire Rope



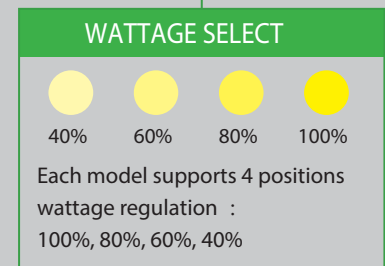
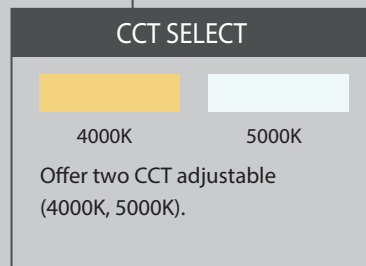
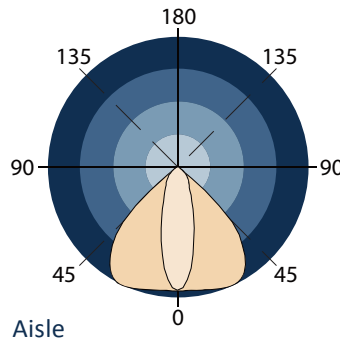
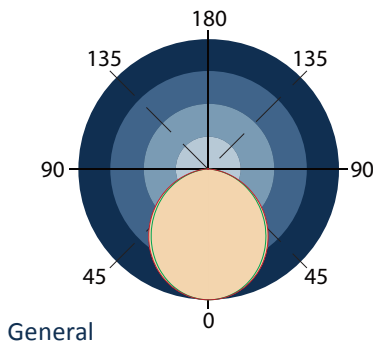
Surface Mounting



Conduit Pendant Mount


**CCT AND WATTAGE SELECTABLE**

This fixture has the function of adjusting the lumens output and color temperature on-site.


**PHOTOMETRICS**

**ACCESSORIES (OPTIONAL)**

<b>Plug-and-Play Microwave Sensor 12-24VDC</b> Microwave sensor: ANT-5-4T Bluetooth microwave sensor: ANT-5-4T-BLE-SR (Sold separately)	<b>Emergency Battery</b> 8W 900lm 90min, suit for 130W, 160W (Sold separately)	<b>Emergency Battery</b> 20W 3000lm 90min, suit for 210W, 260W (Sold separately)	<b>Emergency Battery</b> 30W, 4000lm, 90min, suite for 347-480V input voltage (Sold separately)
<b>Plug-and-Play PIR Sensor 12-24VDC</b> PIR sensor: ANT-6-4T Bluetooth PIR sensor: ANT-6-4T-BLE-SR (Sold separately)	<b>Steel Wire Rope (Default)</b> USE: Chain mounting.	<b>Pendant Hanger</b> USE: Pendant with 3/4" conduit (Sold separately)	<b>Wire Guards</b> (Sold separately)