

L70
25°C **196,000 Hours**



FEATURES

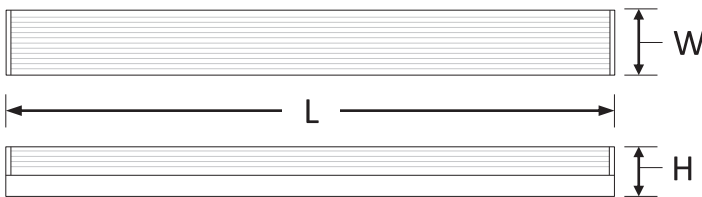
- Field selectable 3500k (warm/neutral white), 4000k (neutral white), and 5000k (cool white) color temperatures.*
- Long-life LEDs provide 196,000 hours of operation with at least 70% of initial lumen output (L70), and 60,000 hours with at least 90% of initial lumen output (L90).**
- LED chromaticity based on < 4-step ANSI quadrangles.
- LED color maintenance < 0.002 chromaticity shift ($\Delta u'v'$) over the initial 6,000 hours of operation.
- SL-4FT-5L-LKFS provides a range of 3,700 to 5,200 nominal lumens and 138 to 152 lumens per watt (LPW).*
- SL-8FT-10L-LKFS provides a range of 7,100 to 10,100 nominal lumens and 132 to 149 lumens per watt (LPW).*
- Universal 120-277 AC voltage (50-60Hz) is standard.
- 0-10vdc dimming drivers are standard.
- Power factor > 0.90.
- Total harmonic distortion < 20%.
- Color rendering index > 80.
- Steel housing and PMMA lens.
- Optional emergency drivers and occupancy sensors are available.
- Easy installation in new construction or retrofit.

* Contact factory for other color temperatures and lumen packages.
** L70 hours are IES TM-21-11 calculated hours.

WARRANTY & LISTINGS

- cULus approved for damp locations in ambient temperatures from -20°C to 50°C (-4°F to 122°F).
- DLC Listed, for low bay and direct linear ambient application.
- Complies with FCC Part 15, Class A.
- Complies with IEEE C.62.41-1991, Class A input transient surge protection (1.0kV).
- 5-year warranty of all electronics and housing.

DIMENSIONS



	SL-4FT-LKFS	SL-8FT-LKFS
L	47.3"	94.2"
W	3.3"	3.3"
H	3.5"	3.5"
Weight (lbs)	4.5	9

ORDERING INFORMATION

EXAMPLE: SL-4FT-5L-LKFS-ODS-EM10



Series	Length	Nominal Lumen Output	Select	Occupancy Sensor ^{1,2}	Internally Installed Emergency Drivers ³
SL	4FT	5L = 5,200/4,300/3,600	LKFS	OS = Passive Infrared ODS = Microwave Blank = No occupancy sensor	EM5 = 650 lumens EM10 = 1,390 lumens EM13 = 1,780 lumens Blank = No emergency driver
	8FT	10L = 10,000/8,500/7,100			

¹ Contact factory for other sensors.

² OS = passive infrared technology – features include on/off only. ODS = microwave technology – features include on/off, step-dimming, and daylight threshold. Default sensor settings: detection area = 100%, hold time = 5 seconds, stand-by period = 0 seconds, stand-by dimming level = 10%, daylight threshold = disabled. Remote control optional but not required, part number = HD03R.

³ See emergency driver compatibility list (page 2).

COMPATIBLE EMERGENCY DRIVERS*

Emergency Driver Part Number	EM5		EM10		EM13	
Model	Watts	EM Lumens	Watts	EM Lumens	Watts	EM Lumens
SL-4FT-5L-LKFS	5.0	760	10.7	1627	13.7	2083
SL-8FT-10L-LKFS	5.0	760	10.7	1627	13.7	2083

* Suitable for ambient temperatures above 10°C (50°F).

COMPATIBLE EMERGENCY DRIVERS INTERNALLY INSTALLED^{1 2}

Model	Emergency Options
SL-4FT-5L-LKFS SL-8FT-10L-LKFS	EM5 EM10 EM13

¹ Suitable for ambient temperatures above 10°C (50°F).
² For list of remote mountable emergency drivers, see *ACCESSORIES*.

ACCESSORIES (ORDER SEPARATELY)

Remote Mount Emergency Drivers*

- BLEM-CP-5C = Emergency driver - EM5
- BLEM-CP-10C = Emergency driver - EM10
- BLEM-CP-13C = Emergency driver - EM13

Wire Guard

- SL-4FT-WG = Wire-guard kit – 4FT
- * Suitable for ambient temperatures above 10°C (50°F).

Glare Shield

- SL-GLARESHIELD-4FT = Glare Shield for SL-LKFS - 4FT, White

COMPATIBLE DIMMERS & CONTROLS

Manufacturer	Model Number	Dimming Range	Load Switching Capacity
Mule Lighting	DWS-010V-T	10%-100%	600W
Mule Lighting	DWS-010V-D	10%-100%	600W
Leviton	IP710-LFZ	10%-100%	1200W
Lutron	DVSTV	10%-100%	450W

ELECTRICAL DATA

Series	Measurements	Low Lumens			Mid Lumens			High Lumens		
		3500K	4000K	5000K	3500K	4000K	5000K	3500K	4000K	5000K
SL-4FT-LKFS	Lumens	3690	3631	3722	4336	4317	4389	4876	5203	4908
	Watts	26	25	26	31	30	31	35	34	35
	Efficacy	143	143	144	140	143	142	138	152	139
	Input Current (A)	120V = 0.22A	120V = 0.21A	120V = 0.22A	120V = 0.26A	120V = 0.25A	120V = 0.26A	120V = 0.29A	120V = 0.28A	120V = 0.29A
240V = 0.11A		240V = 0.10A	240V = 0.11A	240V = 0.13A	240V = 0.13A	240V = 0.13A	240V = 0.15A	240V = 0.14A	240V = 0.15A	
277V = 0.09A		277V = 0.09A	277V = 0.09A	277V = 0.11A	277V = 0.11A	277V = 0.11A	277V = 0.13A	277V = 0.12A	277V = 0.13A	

Series	Measurements	Low Lumens			Mid Lumens			High Lumens		
		3500K	4000K	5000K	3500K	4000K	5000K	3500K	4000K	5000K
SL-8FT-LKFS	Lumens	7251	7135	7314	8520	8483	8624	9553	10,124	9619
	Watts	55	55	55	60	60	60	70	68	70
	Efficacy	132	130	133	142	141	144	136	149	137
	Input Current (A)	120V = 0.46A	120V = 0.46A	120V = 0.46A	120V = 0.50A	120V = 0.50A	120V = 0.50A	120V = 0.58A	120V = 0.57A	120V = 0.58A
240V = 0.23A		240V = 0.23A	240V = 0.23A	240V = 0.25A	240V = 0.25A	240V = 0.25A	240V = 0.29A	240V = 0.28A	240V = 0.29A	
277V = 0.20A		277V = 0.20A	277V = 0.20A	277V = 0.22A	277V = 0.22A	277V = 0.22A	277V = 0.25A	277V = 0.25A	277V = 0.25A	

PHOTOMETRIC DATA

SL-4FT-5L-LKFS

Luminaire Data

Description	4' Strip Light 5L 5K - LKFS
Total Lumens	4,908
Input Wattage	35
Efficacy (lm/W)	139
Spacing Criterion (0-180°)	1.24
Spacing Criterion (90-270°)	1.36

Zonal Lumen Summary

Zone	Lumens	%Fixt
0-20°	470	9.6%
0-30°	1,002	20.4%
0-40°	1,653	33.7%
20-50°	1,877	38.2%
40-70°	1,927	39.3%
0-60°	3,009	61.3%
0-80°	4,024	82.0%
0-90°	4,338	88.4%
90-180°	570	11.6%
0-180°	4,908	100.0%

