

L70
25°C **100,000 Hours**



NOTES:

FIXTURE TYPE:

PROJECT:



CONSTRUCTION

- Standard lengths are 2ft, 4ft, 8ft, and it can be extended via row connectors and occlusion blocks.
- The fixture channel, cover, and plates are formed from cold-rolled steel.
- Housing components act as a heat sink for LED heat dissipation.
- An optional internal pluggable wiring harness is available to reduce labor costs in row-mounting applications.
- The fixture can be surface-mounted or pendant-mounted, with appropriate mounting options provided (see accessories).

OPTICS

- Selectable CCT: 3500K, 4000K, 5000K or 3000K, 3500K, 4000K, 5000K, 6500K.
- Scalable lumen packages range from 1,400 to 12,000 lumens, with efficacy up to 156lm/W.
- <5 SDCM color consistency, 80 CRI.
- Features acrylic lens is designed to shape the light uniformity and comfortable light.

LIFESPAN

- Estimated L70 ≥100,000-hour LED lifespan based on IES TM-21 calculations at 25°C.

APPLICATIONS

- Suitable for commercial, warehouses, parking lot, corridor, retail spaces.

ORDERING INFORMATION

EXAMPLE: MLF04-2F-24W-27V-DDK-W-M-B



Model	Size	Power	Voltage	CCT	Finish	Sensor	Backup Battery
MLF04 = Linear Fixture	2F = 2FT 4F = 4FT 8F = 8FT	24W = 24Watts 40W = 40Watts 70W = 70Watts	27V = 120-277V	DDK = Selectable Color Temperature 30K = 3000K 35K = 3500K 40K = 4000K 50K = 5000K 65K = 6500K	W = White	M = With Sensor Blank = Without Sensor	B = Emergency Battery Blank = Without Emergency Battery

NOTE: ¹ Available for the foldable version.

ELECTRICAL

- Universal 120-277 VAC input voltage.
 - Selectable Wattage Levels: 10W/16W/20W/24W; 22W/28W/34W/40W; 46W/54W/62W/70W; 50W/60W/70W/86W.
 - 0-10V dimming driver with 10%-100% dimming range.
 - PF > 0.9, THD < 20%.
 - Operating Temperature Range: -20°C to 40°C (-4 F - + 104 F).
- Note: Operating temperature range with emergency battery : 10°C to 40°C (+50 F - + 104 F).

CONTROLS

- A PIR sensor or Bluetooth smart control sensor is optional and available to further enhance energy savings.
- The optional sensor receptacle enables quick on-site installation of sensors.
- Emergency battery backup optional.

INSTALLATION

- Surface Mount - Standard.
- Chain Suspended Mount.
- Aircraft Cable Mount.
- T-Grid Mount.

WARRANTY

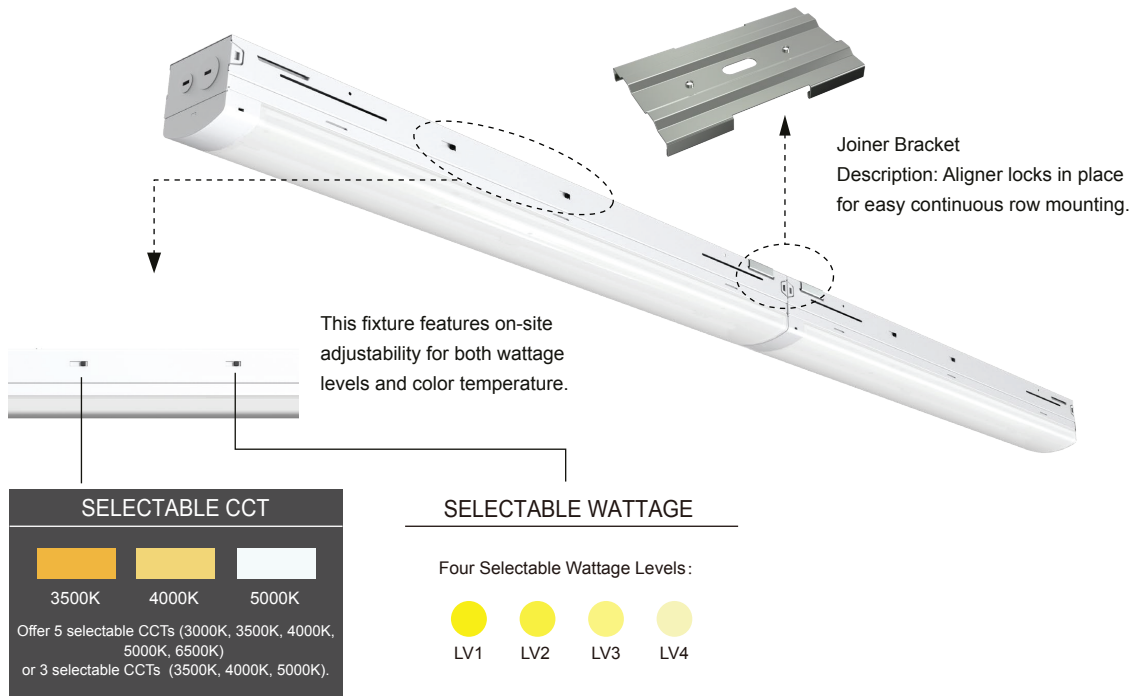
- Five-year limited warranty.

CERTIFICATIONS

- UL cUL damp location listed.

NOTE

Actual performance may differ as a result of end-user environment and application. All values are design or typical values, measured under laboratory conditions at 25°C (±5°C). Specifications are subject to change without notice.



FOLDING (OPTION)

8 ft fixture, 4 ft box.

The 8-foot-long MLF04 lighting fixture incorporates an innovative internal hinge design, allowing it to fold in half for shipping. This feature reduces packaging materials and lowers shipping, storage space, and associated costs. Once unpacked, it unfolds smoothly and locks securely for effortless installation.

Folding Effect



Unfolding Effect



PERFORMANCE DATA

MLF04 24W 2FT @ Three Selectable CCTs

SETTING	SYSTEM WATTS	3500K(80CRI)		4000K(80CRI)		5000K(80CRI)	
		LUMENS(lm)	LPW(lm/W)	LUMENS(lm)	LPW(lm/W)	LUMENS(lm)	LPW(lm/W)
LV1	24W	3300	138	3500	146	3400	142
LV2	20W	2800	140	3000	150	2900	145
LV3	16W	2300	144	2500	156	2400	150
LV4	10W	1400	140	1600	160	1500	150

MLF04 40W 4FT @ Three Selectable CCTs

SETTING	SYSTEM WATTS	3500K(80CRI)		4000K(80CRI)		5000K(80CRI)	
		LUMENS(lm)	LPW(lm/W)	LUMENS(lm)	LPW(lm/W)	LUMENS(lm)	LPW(lm/W)
LV1	40W	5400	135	5700	143	5600	140
LV2	34W	4700	138	5000	147	4800	141
LV3	28W	4000	143	4200	150	4100	146
LV4	22W	3200	145	3400	155	3300	150

MLF04 70W 8FT @ Three Selectable CCTs

SETTING	SYSTEM WATTS	3500K(80CRI)		4000K(80CRI)		5000K(80CRI)	
		LUMENS(lm)	LPW(lm/W)	LUMENS(lm)	LPW(lm/W)	LUMENS(lm)	LPW(lm/W)
LV1	70W	9500	136	10000	143	9800	140
LV2	62W	8600	139	9100	147	8900	144
LV3	54W	7700	143	8100	150	7900	146
LV4	46W	6700	146	7100	154	6900	150

PERFORMANCE DATA

MLF04 24W 2FT @ Five Selectable CCTs

SETTING	SYSTEM WATTS	3000K(80CRI)		3500K(80CRI)		4000K(80CRI)		5000K(80CRI)		6500K(80CRI)	
		LUMENS (lm)	LPW (lm/W)	LUMENS (lm)	LPW (lm/W)	LUMENS (lm)	LPW (lm/W)	LUMENS (lm)	LPW (lm/W)	LUMENS (lm)	LPW (lm/W)
LV1	24W	3300	136	3400	142	3500	146	3500	146	3400	142
LV2	20W	2800	138	2900	145	3000	150	3000	150	2900	145
LV3	16W	2200	140	2400	150	2500	156	2500	156	2400	150
LV4	10W	1400	143	1500	150	1600	160	1600	160	1500	160

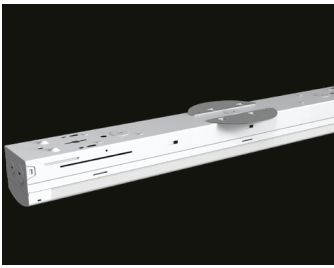
MLF04 40W 4FT @ Five Selectable CCTs

SETTING	SYSTEM WATTS	3000K(80CRI)		3500K(80CRI)		4000K(80CRI)		5000K(80CRI)		6500K(80CRI)	
		LUMENS (lm)	LPW (lm/W)	LUMENS (lm)	LPW (lm/W)	LUMENS (lm)	LPW (lm/W)	LUMENS (lm)	LPW (lm/W)	LUMENS (lm)	LPW (lm/W)
LV1	40W	5400	135	5600	140	5700	143	5700	143	5600	140
LV2	34W	4700	138	4800	141	5000	147	5000	147	4800	141
LV3	28W	4000	143	4100	146	4200	150	4200	150	4100	146
LV4	22W	3200	145	3300	150	3400	155	3400	155	3300	150

MLF04 70W 8FT @ Five Selectable CCTs

SETTING	SYSTEM WATTS	3000K(80CRI)		3500K(80CRI)		4000K(80CRI)		5000K(80CRI)		6500K(80CRI)	
		LUMENS (lm)	LPW (lm/W)	LUMENS (lm)	LPW (lm/W)	LUMENS (lm)	LPW (lm/W)	LUMENS (lm)	LPW (lm/W)	LUMENS (lm)	LPW (lm/W)
LV1	70W	9500	136	9800	140	10000	143	10000	143	9800	140
LV2	62W	8600	139	8900	144	9100	147	9100	147	8900	144
LV3	54W	7700	143	7900	146	8100	150	8100	150	7900	146
LV4	46W	6700	146	6900	150	7100	154	7100	154	6900	150

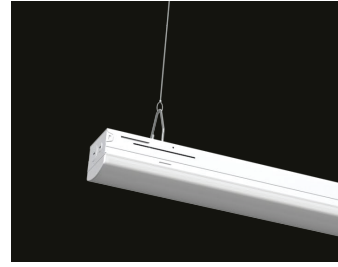
WAYS TO INSTALL



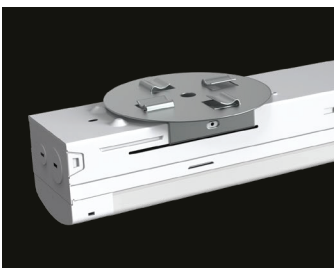
Surface Mount
(Standard)



Chain Suspended Mount
(Sold Separately)



Aircraft Cable Mount
(Sold Separately)



T-Grid Mount
(Sold Separately)

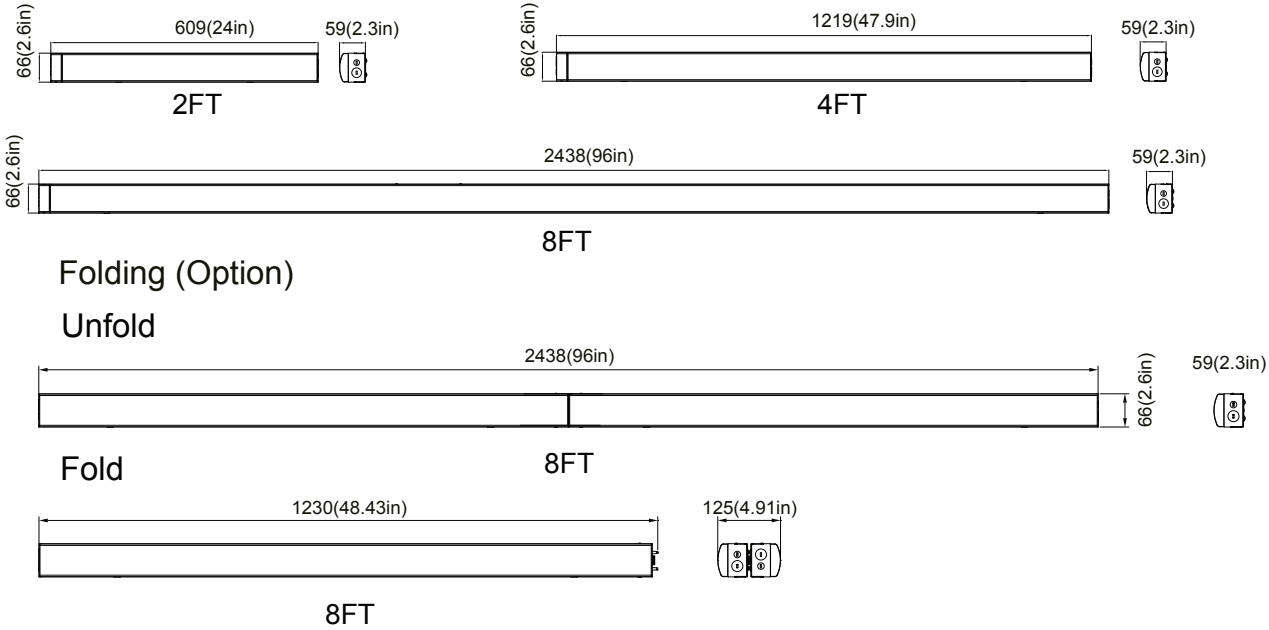


ELECTRICAL DATA

Number of Drivers	Driver Current(mA)	Nominal Power(W)	Input Voltage(V)	Current(Amps)
1	510	24	120	0.20
		24	208	0.12
		24	240	0.10
		24	277	0.09
1	830	40	120	0.33
		40	208	0.19
		40	240	0.17
		40	277	0.14
1	1470	70	120	0.58
		70	208	0.34
		70	240	0.29
		70	277	0.25

DIMENSIONS

Unit: mm/inch



ACCESSORIES (OPTIONAL)

1 AIRCRAFT CABLE MOUNT KIT	2 CHAIN SUSPENDED MOUNT KIT	3 T-GRID MOUNT KIT
<ul style="list-style-type: none"> • AH-LF04-10FT Aircraft Cable Suspended Kit 10ft Hooks Directly onto Housing, 1 Set (2 Hooks and 2 Aircraft Cable) 	<ul style="list-style-type: none"> • CH-LF04-4FT Chain Suspended Kit 3.5ft Hooks Directly onto Housing, 1 Set (2 Hooks and 2 Chains) 	<ul style="list-style-type: none"> • TB-LF04 PK_LF04_T-Grid Bracket, 1 Set (2 Tgrids)
4 AIRCRAFT CABLE MOUNT KIT-F	5 CHAIN SUSPENDED MOUNT KIT-F	6 T-GRID MOUNT KIT-F
<ul style="list-style-type: none"> • AH-LF04-10FT-F Aircraft Cable Suspended Kit 10ft Hooks Directly onto Housing, 3pcs 1 Set, for 8ft Foldable Version 	<ul style="list-style-type: none"> • CH-LF04-4FT-F Chain Suspended Kit 3.5ft Hooks Directly onto Housing, 3pcs 1 Set, for 8ft Foldable Version 	<ul style="list-style-type: none"> • TB-LF04-F PK_LF04_T-Grid Bracket, 1 Set (3 Tgrids)
7 JOINER BRACKET KIT	8 4FT WIRE GUARD KIT	9 8FT WIRE GUARD KIT
<ul style="list-style-type: none"> • JB-LF04 Joiner Bracket, for MLF04 Series 	<ul style="list-style-type: none"> • WG-LF03-4FT Wire Guard, MLF03 4ft NET-36W, 1pcs 	<ul style="list-style-type: none"> • WG-LF03-8FT Wire Guard, MLF03 8ft NET-68W, 1pcs

PLUG-IN PIR SENSOR

The optional receptacle for plug-and-play sensor eliminates the need for on-site modifications, making installation quick and hassle-free.

