



Shown with 6 Light Engine  
(165W & 198W)

Shown with 4 Light Engines  
(100W & 134W)

Shown with 2 Light Engines  
(65W & 80W)

### PRODUCT DESCRIPTION

The Made in USA BABA Compliant full cutoff area light side mount is available in 6 wattages offered in Type II Wide narrow, Type III, Type IV or Type V optical distribution that is designed highly uniform lighting. Typical wall mounted lighting applications include retail centers, industrial parks, schools and universities, public transit and airports, office buildings and medical facilities. Mounting heights of 12 to 25 feet can be used based on light level and uniformity requirements.

### FEATURES

**LED:**

- Conformal Coating LED Light Engine
- CCT: Amber, LPS (1800K), 2200K, 2700K, 3000K, 4000K, 5000K
- Static Colors Available - Contact Factory

**Distribution:**

- Full Cutoff
- Types II, III, IV, V Optics

**Mounting:**

- Side mount arm for pole mounting
- Pole mounting hardware included

**Electrical:**

- Electronic Driver, 120-277V or 347/480V
- 0-10v Dimmable Driver (Dimming leads capped inside housing)
- Standard Surge Protection Included (6kV Line-Line; 10k-V Line-Earth)

**Housing:**

- Formed aluminum with cast aluminum side mount arm.
- Internal extruded aluminum heat sinks for light engines and light engines.
- Housing is welded construction with T3 heat treating before powder coating.

**Finish:**

- Super Durable Polyester Powder Coat Finish. Custom Finishes Available, Including Patinas and All RAL colors.

**Listing & Ratings:**

- ETL: Listed for Wet Locations, ANSI/UL 1598, 8750
- IP66 Sealed LED Compartment.

**Warranty:**

- 5-Year Warranty for -40°C to +50°C Environment.

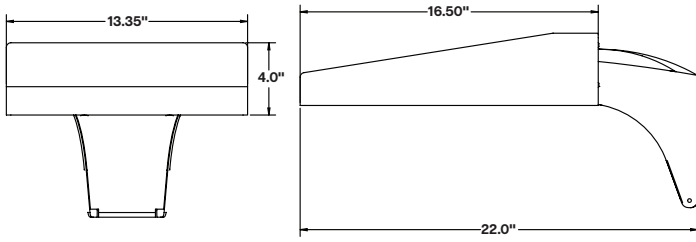
### ORDERING INFORMATION

EXAMPLE: LA20-198-4K-U-5-SM-BK

Model	Wattage	CCT	Driver	Optics	Mounting	Options	Finish
LA20 =Liberty LED Full Cutoff Area Light Side Mount Arm	65W =65w 2-Light Engines 80W =80w 2-Light Engines 100W =100w 4-Light Engines 134W=134w 4-Light Engines 165W=165w 6-Light Engines 198W=198w 6-Light Engines	3K=3000K 4K=4000K 5K=5000K	U=120-277V H=347/480V	2=Type II 3=Type III 4=Type IV 5=Type V	SM=Side Mount Arm	SF=Single Fuse DF=Double Fuse SP=Surge Protection PC3=Button Photocell R3=3-Pin Twist Lock Photocell Receptacle R7=7-Pin ANSI C136.41—2013 Twist Lock Photocell Receptacle M4=Motion Sensor IR with Lens, for heights up to 20’* M5=Motion Sensor IR with Lens, for heights up to 40’* HS=House Side Shield	BK =Black BZ =Bronze DBZ =Dark Bronze TBZ =Textured Flat Bronze WH =White GR =Green SM =Silver Metallic GY =Light Gray TBK =Textured Black QBK =Textured Flat Black CC =Custom Color (Consult Factory)

\*120-277V Only

### DIMENSIONS

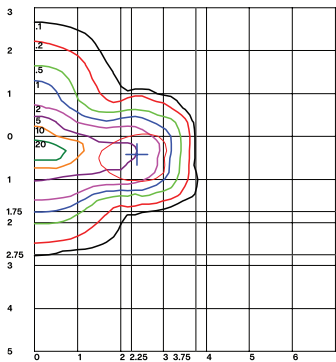


### PHOTOMETRIC PERFORMANCE TABLE

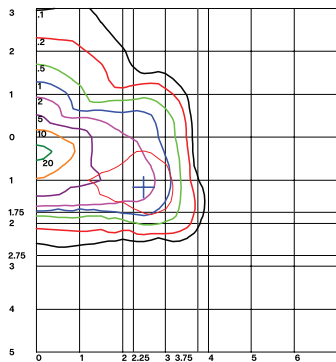
Wattage (Catalog Logic)	65 Watts (65W)	80 Watts (80W)	100 Watts (100W)	134 Watts (134W)	168 Watts (168W)	198 Watts (198w)	
Light Engine Quantity	2	2	4	4	6	6	
Optic	CCT	Delivered Lumens					
2 = Type II Clear PC Lens	3K	9,340	11,496	14,366	19,256	23,710	28,452
	4K	9,722	11,966	14,957	19,441	24,680	29,616
	5K	9,722	11,966	14,957	19,441	24,680	29,616
	BUG Rating	B2-U0-G2	B2-U0-G2	B2-U0-G2	B3-U0-G3	B3-U0-G3	B3-U0-G3
3 = Type III Clear PC Lens	3K	9,392	11,559	14,445	19,361	23,840	28,608
	4K	9,776	12,032	15,040	20,153	24,815	29,778
	5K	9,776	12,032	15,040	20,153	24,815	29,778
	BUG Rating	B2-U0-G2	B2-U0-G2	B3-U0-G3	B3-U0-G3	B3-U0-G3	B3-U0-G3
4 = Type IV Clear PC Lens	3K	9,389	11,556	14,441	19,356	23,834	28,601
	4K	9,773	12,028	15,036	20,148	24,809	29,771
	5K	9,773	12,028	15,036	20,148	24,809	29,771
	BUG Rating	B3-U0-G2	B4-U0-G2	B3-U0-G3	B3-U0-G3	B3-U0-G3	B3-U0-G4
5 = Type V Clear PC Lens	3K	9,575	11,758	14,727	19,739	24,305	29,166
	4K	9,966	12,266	15,333	20,546	25,299	30,359
	5K	9,966	12,266	15,333	20,546	25,299	30,359
	BUG Rating	B3-U0-G2	B4-U0-G2	B4-U0-G2	B4-U0-G2	B5-U0-G3	B5-U0-G3

Please refer to the fixture's IES file for detailed information. Subject to change.

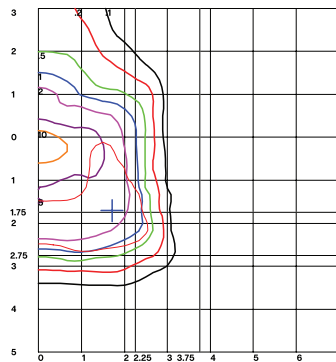
### PHOTOMETRIC DATA



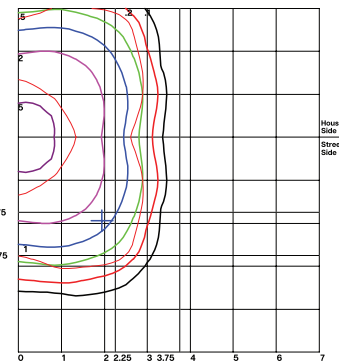
Distance In Units Of Mounting Height  
Values Based On 20 Foot Mounting Height  
1/2 Maximum Candela Traces Shown As Dashed Curve  
(+) Maximum Candela Point  
**LA20198W5KU2**  
Type II  
Grid in MH  
MH=20 Feet



Distance In Units Of Mounting Height  
Values Based On 20 Foot Mounting Height  
1/2 Maximum Candela Traces Shown As Dashed Curve  
(+) Maximum Candela Point  
**LA20198W5KU3**  
Type III  
Grid in MH  
MH=20 Feet



Distance In Units Of Mounting Height  
Values Based On 20 Foot Mounting Height  
1/2 Maximum Candela Traces Shown As Dashed Curve  
(+) Maximum Candela Point  
**LA20198W5KU4**  
Type IV  
Grid in MH  
MH=20 Feet



Distance In Units Of Mounting Height  
Values Based On 20 Foot Mounting Height  
1/2 Maximum Candela Traces Shown As Dashed Curve  
(+) Maximum Candela Point  
**LA20198W5KU5**  
Type V  
Grid in MH  
MH=20 Feet

## MOUNTING ACCESSORIES

Part Number	Description
<b>KH20RPZ</b>	Die-Cast Adaptor for 3" to 5" Round Poles, Bronze Powdercoat Finish.
<b>KH20WMZ</b>	Die-Cast Wall Mount Adaptor, Bronze Powdercoat Finish.



**KH20RPZ**



**KH20WMZ**

## REPLACEMENT PARTS

Part Number	Description
<b>P18131</b>	Twist Lock Non-Shorting (Open) Cap Disconnects Service to Fixture for Temporary or Permanent Disabling (Fixture Always Off). IP65, 480V Maximum.
<b>P18132</b>	Twist Lock Shorting Cap Provides Fixed Service to Fixture (Fixture Always on). IP65, Rated Load 7200w Tungsten.
<b>P18140</b>	110-120VAC Instant Twist Lock Photocell
<b>P18152</b>	277VAC Time Delay Twist Lock Photocell
<b>P18156</b>	120-277VAC Universal Twist Lock Photocell
<b>P18103</b>	120-277VAC Universal Photocell
<b>P1816023</b>	Motion Sensor IR with Lens, 120-277V Only, for heights up to 20'
<b>P1816027</b>	Motion Sensor IR with Lens, 120-277V Only, for heights up to 40'
<b>P18160</b>	Motion Sensor IR Control Module, No lens